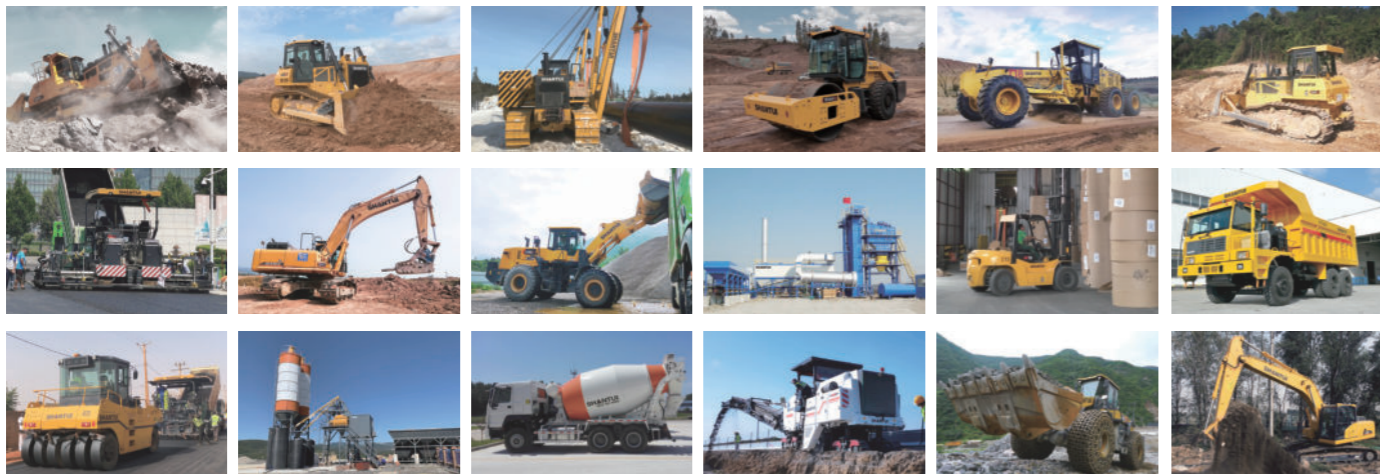


LET'S MAKE CONSTRUCTION EASIER

GROUP PRODUCTS



Shantui Social

**SHANTUI CONSTRUCTION MACHINERY CO., LTD.**  
 ADD: No. 58, G327 Highway, Jining City, Shandong, CHINA  
 TEL: +86-537-2909369  
 FAX: +86-537-2311219  
 EMAIL: trade@shantui.com  
 WEB: www.shantui.com

**SHANTUI**  
 LET'S MAKE CONSTRUCTION EASIER

**SHANTUI**

**SD32 SERIES**  
 Crawler Dozer



Engine Model: CUMMINS NTA855-C360S10  
 Gross Power: 257KW(350HP)@2000RPM  
 Operating Weight: 34,500kg

SHANTUI Torqflow Travel Drive  
 powershift transmission

**320HP Bulldozer Series**

**SHANTUI**



## COMFORT



### Power system

Chongqing Cummins NTA855-C360S10 engine with the exhaust turbocharger features the high power, efficiency and energy saving. The Cummins or Weichai engines are optional depending on user requirements.



### Drive system

The reliable power-shift transmission, the steady hydraulic torque converter and the stage-II spur-tooth final drive could perform the effective power output and produce the high efficiency.

\* Hydraulic torque converter could protect the drive system against the sudden torque impact and the vibration.

\* Planetary type transmission with power shift has the forward three gears, reverse three gears, and the clutch with high diameter, high capacity and oil-cooling type, featuring high efficiency.

### Driving environment

\* The operator will feel more safe and comfortable due to the new hexahedral cab that provides the big room and the expanded outlook and the vibration damper, as well as the electronic monitor mounted according to the user requirements.

\* According to the man-machine engineering, the driver's seat and handle could be easily adjusted upward, downward, forward and backward. In addition, the speed control, the steering wheel and the accelerator are on left side and adopt the cable type. The working equipment is on right side and adopts the servo-control system, realizing the flexible process and relieving the fatigue.

### Chassis system

\* The final drive is of low drive type, providing the strong driving force and the effective gradeability.

\* The balance beam is floatingly connected to the trolley through the rubber damper, not only lowering the impact load transferring to the chassis system also raising the swinging angle of left and right trolleys. That profiles the work terrain, furthering the trafficability on the uneven road.

\* The standard four rollers and one track (sprocket roller, idler roller, track roller, carrier roller and track) come from Shantui. In addition, track type chassis has the high reliability and the load-bearing capacity, suitable for all kinds of complex working conditions and with

## DURABILITY



the processing technologies reaching the advanced world standard.

### Cooling system

The independent engine radiator, the chassis oil cooler, the coolant matching with the Chongqing Cummins engine and the air cooler provide the excellent cooling performance and the simple maintenance for this bulldozer, ensuring machine works continuously.

### Structure

The main frame of box type adopts the quality material and the strength castings and enjoys the high impact load and torsion, able to work continuously even under the harsh conditions. In addition, the quality welding seam could ensure the main frame works in its life cycle.

### Accessories for working parts

\* The standard straight shovels have the excellent durability due to the high cutting force, high-strength structure and high-performance material and thus are available for all tough environments. Besides, the angle shovels and semi U-shovels are available to users.

\* Large single-tooth ripper with the adjustable penetration angle is used to loosen the soil layers such as the clay and the frozen soil and to peel off the solid surface such as the gravels and the hardened salt mine. The work efficiency and the super penetration are guaranteed with the strength beam, the frame and the tempered tooth bar and tip. The winch is used to drag the trees out of the forest and the bulldozers, with the special self-help functions ensuring the operator safety and the high traction ensuring the effective operations.

\* Besides the standard equipments, the special accessories and equipments such as the comb plough are optional to meet the requirements from different users. In addition, the comb plough is suitable for SD32F logging bulldozer.

### Safety

\* The safe warning lamp, the reversing alarm, the horn, the excellent brake and the distinctive painting could effectively protect the periphery personnel and enhance the safety in all-weather operations. In addition, the seatbelt, the handles and the safe signs give the security protection to the operators.

\* The side guard could effectively protect the engine and the radiator from being blocked and damaged due to the foreign particles, making the entire machine more beautiful.

\* The standard antifreeze could raise the boiling point and lower the freezing point, effectively preventing against the scales depositing on the engine and the radiator, beneficial to the engine cooling and the protection.

\* In addition, the sport bars for litters and others are optional and could protect the operators in emergency.

### Maintenance

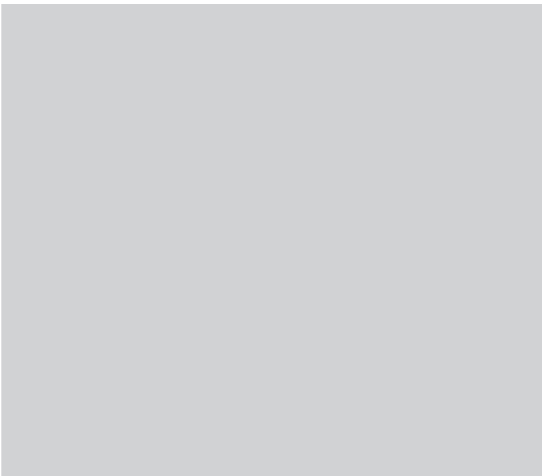
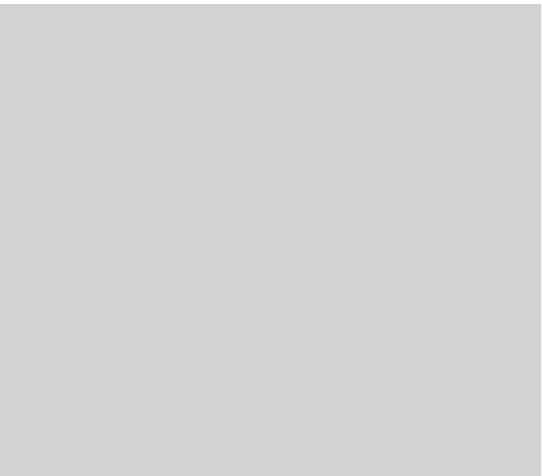
\* The eye-catching signs say accurately when to maintain the machine. In addition, this battery is maintenance-free. In addition, the open-type hood could have the inside parts exposed as much as possible, easily realizing the inspection and the maintenance.

\* This maintenance cost is much lower than others due to the reliability and thus the long Mean Time Between Failures (MTBF).

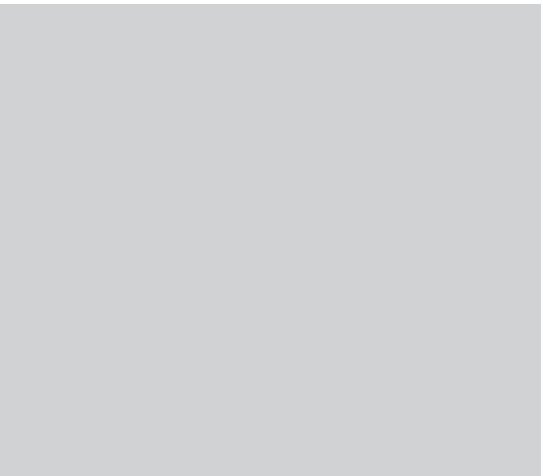
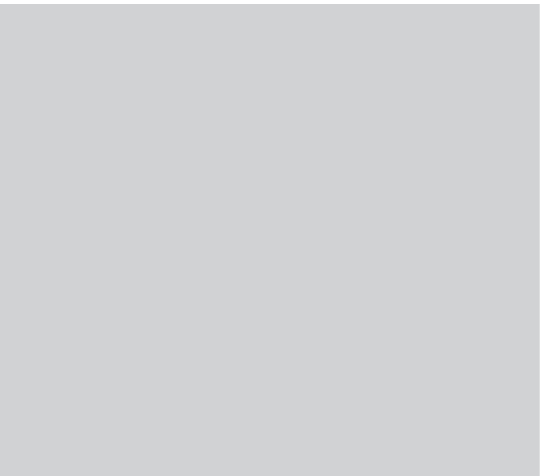
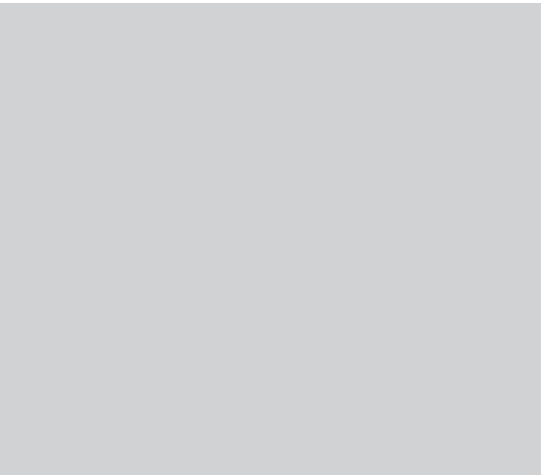
\* Shantui perfect service network, as well as timely, thoughtful and warmhearted service, could give your assurance to use this machine, satisfying the expectancy for Shantui products.



**COMFORT**



**DURABILITY**



## COMFORT



### SD32C Rock Bulldozers

Engine Model:

Cummins NTA855-C360S10

Operating Weight (excluding ripper):

372 Tons



### SD32F Rock Bulldozers

Engine Model:

Cummins NTA855-C360S10

Operating Weight (excluding ripper):

372 Tons



### SD32R Rock Bulldozers

Engine Model:

Cummins NTA855-C360S10

Operating Weight (excluding ripper):

372 Tons

## DURABILITY



### SD32W Rock Bulldozers

Engine Model:

Cummins NTA855-C360S10

Operating Weight (excluding ripper):

372 Tons



### SD32-5 Rock Bulldozers

Engine Model:

Cummins NTA855-C360S10

Operating Weight (excluding ripper):

372 Tons



### SD32D Rock Bulldozers

Engine Model:

Cummins NTA855-C360S10

Operating Weight (excluding ripper):

372 Tons

SPECIFICATIONS

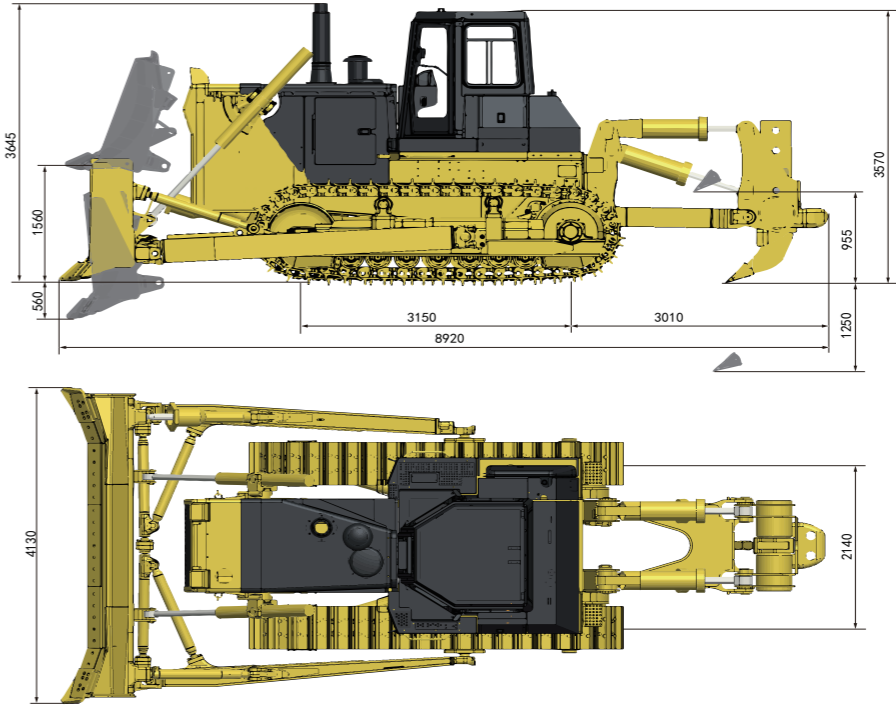


ENGINE		SD32		SD32C		SD32D		SD32R		SD32W	
Engine		Cummins NTA855-C360S10									
Rated revolution		2000rpm									
Gross power		257kW(350hp)@2000rpm									
Net power		235kW(320hp)@2000rpm									
Number of cylinder-bore×stroke		6-140X152mm									
Displacement		14.01L									
Max. torque		1509N.m@1400rpm									
Cooling system		Mechanic fan									
DRIVE SYSTEM		SD32		SD32C		SD32D		SD32R		SD32W	
Drive system		Manufactured by SHANTUI, with high working efficiency, low breakdown rate; torqflow transmission, 3 gears forward and 3 gears backward.									
Traveling speed	Forward	F1:0~3.6	F2:0~6.6	F3:0~11.5	km/h						
	Backward	R1:0~4.4	R2:0~7.8	R3:0~13.5	km/h						
Max. theoretical traction force		318.2kN									
Torque converter		3-element, single stage, 1-phase									
Transmission		Planetary gear and torqflow transmission hydraulically actuated, forced lubrication									
Central drive		Spiral bevel gear, single-stage speed reduction, splash lubrication									
Steering clutch		Wet multiple disc, disc spring loaded, hydraulically actuated, hand operated, interconnected with steering brake.									
Brake clutch		Wet, contracting band, foot operated with hydraulic booster									
Final drive		Spur gear, double reduction ,splash lubrication									
CHASSIS SYSTEM		SD32		SD32C		SD32D		SD32R		SD32W	
Type		Swing type of sprayed beam, suspended structure of equalizer bar									
Track shoe type		Single grouser									
Track gauge		2140mm									
Width of track shoe		560mm/610mm/660mm/710mm/760mm								560mm (heavy duty)	
Track grounding length		3150mm									
Track grounding area		35280/38430/41580/44730/47880cm <sup>2</sup>								35280cm <sup>2</sup>	
Number of track shoe		41 pcs/side									
Grounding pressure (standard configuration)		83.8kPa		84.6kPa		83kPa		85.6kPa		85.1kPa	
Number of carrier roller		2 pcs/side									
Number of track roller		7pcs/side									
Pitch		228.6mm									
VOLUME		SD32		SD32C		SD32D		SD32R		SD32W	
Fuel capacity		640L									
Coolant liquid capacity		121L									
Engine oil capacity		47L									
Hydraulic oil tank		164L									
Transmission		185L									
Final drive		55L/side									
OPERATING WEIGHT		SD32		SD32C		SD32D		SD32R		SD32W	
Operating weight (standard)		34500kg		34800kg		34150kg		35230kg		35000kg	

BLADE	SD32	SD32C	SD32D	SD32R	SD32W
Blade type	Straight-tilt /Angle/Semi-U	Coal-U	Straight-tilt /Angle/Semi-U	Waste handing	Straight-tilt /Angle/Semi-U
Blade capacity	7.6/4.8/10.5m³	12.6m³	7.6/4.8/10.5m³	18.3m³	7.6/4.8/10.5m³
DIMENSION	SD32	SD32C	SD32D	SD32R	SD32W
Machine height (without ROPS)	3760mm	3760mm	3760mm	3760mm	3760mm
Track grouser height	72mm	72mm	72mm	72mm	72mm
Ground clearance	500mm	500mm	500mm	500mm	500mm
Machine length (without draw bar)	6555mm	6555mm	6555mm	6555mm	6555mm
Machine length (with draw bar)	6878mm	6878mm	6878mm	6878mm	6878mm
Max. lifting height of blade	1560/1703/1560mm	1560mm	1560/1703/1560mm	1560mm	1560/1703/1560mm
Max. digging depth of blade	560/630/560mm	560mm	560/630/560mm	560mm	560/630/560mm
Digging angle of blade	55°±3°(deg.)	55°±3°(deg.)	55°±3°(deg.)	55°±3°(deg.)	55°±3°(deg.)
Blade width	4130/5000/4130mm	4806mm	4130/5000/4130mm	4502mm	4130/5000/4130mm
Blade height	1590/1140/1710mm	1710mm	1590/1140/1710mm	2314mm	1590/1140/1710mm
Width from end of left track shoe to end of right track shoe (standard)	2700mm	2700mm	2700mm	2700mm	2700mm

PARAMETER OF RIPPER

Type	Three-shank ripper	Single shank ripper
Weight	4954kg	4404kg
Max. ripping depth	842mm	1250mm
Max. lifting height	883mm	955mm
Ripper length (at deepest ripping)	2467mm	2855mm
Ripper width	2420mm	1186mm
Departure angle (at highest lifting)	34.5°	34.3°
Ripping width	2240mm	-
Distance between ripper teeth	1120mm	-



\* The specifications are subject to change without notice. The pictures may include options. The actual color & appearance of the product may differ from what is shown.